



### ***Pile Burning in North Tahoe This Week***

We are conducting pile burning operations at the NTPUD Gentry Property beginning today, November 14th, and at the North Tahoe Regional Park tomorrow, November 15th through this week. Please see the attached maps and/or visit [tahoelivingwithfire.com](http://tahoelivingwithfire.com) to learn more about current fuels reduction projects, and other resources that may be available to you.







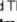
These piles were made in 2019 and 2020 as part of a forest thinning project to reduce the potential for extreme fire behavior and improve forest health. Small or unhealthy trees were cut along with shrub vegetation and this material was stacked in piles for burning. The piles have cured and are ready to be burned on a total of 137 acres in the two locations. The recent snow and favorable conditions this week allow us to complete this forest thinning project.

The burning will produce smoke that may linger for about a week. Weather is looking favorable mid-week to help transport smoke away. Please notify anyone who may be sensitive to smoke. Indoor air filters work well to provide relief during smoky conditions. Smoke is a short term impact for a long-term gain in reducing hazardous and unhealthy fuels in our forest. Thinned forests allow for quicker and more effective fire suppression, and your patience with smoke and the temporary park closure to accomplish this important work are appreciated.

Thank you for the efforts you are making to achieve or maintain defensible space for yourself and your neighborhood. We are all in this fire fight together. As they say, 'An ounce of prevention is worth a pound of cure'.



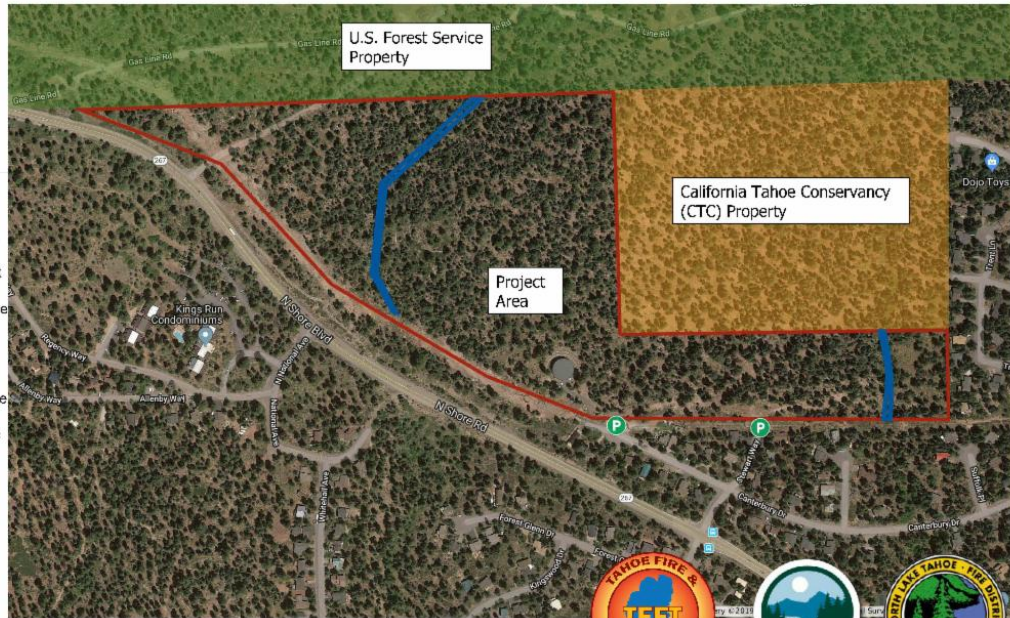
# NTPUD Fuels Reduction Phase 1 - Gentry Property

-  Parking
-  Parking
-  CTC
-  SEZ
-  SEZ
-  FRA
-  Phase 1 A & B

Hand Thin & Pile Burn Treatment at the North Tahoe Public Utility District (NTPUD) "Gentry" property.

- Local Fire Crew Performing Treatment
- Fuel Reduction Treatment includes the removal of small diameter trees, shrubs, and surface fuels
- Piles will be left on-site to cure (dry-out) and ignition of piles will be carried out in the subsequent Spring/Fall

If you have questions please contact:



## North Tahoe Regional Park

Project Boundary

-  North Tahoe Regional Park

USFS

-  USFS

Private Land

-  Private Land

Parking Areas

-  Parking
-  Parking
-  Parking

Access: From HWY 28, turn north on National Ave, and then west on Donner Rd into park

Parking: Multiple areas to park within the project area

Prescription: Hand thin trees up to 14" DBH, reduce shrubs 60-80%, buck and collect slash & dead surface and aerial fuels. All slash to be piled within the project area.

